

THIS COPY HAS BEEN MADE BY OR WITH THE AUTHORITY OF A REGISTERED SURVEYOR. IT IS HEREBY DECLARED TO BE A TRUE AND CORRECT COPY OF THE ORIGINAL SURVEY AND PATENTS ACT 1988, UNLESS THAT ACT PROVIDES A DIFFERENT PROVISION TO COPYRIGHT, THE COPY MUST NOT BE COPIED WITHOUT THE PRIOR PERMISSION OF THE COPYRIGHT OWNER.

SYMBOL	DESCRIPTION
1	Access
2	Access
3	Access
4	Access
5	Access
6	Access
7	Access
8	Access
9	Access
10	Access
11	Access
12	Access
13	Access
14	Access
15	Access
16	Access
17	Access
18	Access
19	Access
20	Access
21	Access
22	Access
23	Access
24	Access
25	Access
26	Access
27	Access
28	Access
29	Access
30	Access
31	Access
32	Access
33	Access
34	Access
35	Access
36	Access
37	Access
38	Access
39	Access
40	Access
41	Access
42	Access
43	Access
44	Access
45	Access
46	Access
47	Access
48	Access
49	Access
50	Access
51	Access
52	Access
53	Access
54	Access
55	Access
56	Access
57	Access
58	Access
59	Access
60	Access
61	Access
62	Access
63	Access
64	Access
65	Access
66	Access
67	Access
68	Access
69	Access
70	Access
71	Access
72	Access
73	Access
74	Access
75	Access
76	Access
77	Access
78	Access
79	Access
80	Access
81	Access
82	Access
83	Access
84	Access
85	Access
86	Access
87	Access
88	Access
89	Access
90	Access
91	Access
92	Access
93	Access
94	Access
95	Access
96	Access
97	Access
98	Access
99	Access
100	Access

SYMBOL	DESCRIPTION
101	Access
102	Access
103	Access
104	Access
105	Access
106	Access
107	Access
108	Access
109	Access
110	Access
111	Access
112	Access
113	Access
114	Access
115	Access
116	Access
117	Access
118	Access
119	Access
120	Access
121	Access
122	Access
123	Access
124	Access
125	Access
126	Access
127	Access
128	Access
129	Access
130	Access
131	Access
132	Access
133	Access
134	Access
135	Access
136	Access
137	Access
138	Access
139	Access
140	Access
141	Access
142	Access
143	Access
144	Access
145	Access
146	Access
147	Access
148	Access
149	Access
150	Access

**PD SITE SURVEYS**  
 1 ISLINGTON DRIVE  
 BESS ACARR  
 DUNCASTER  
 DUNE DES  
 X: 01777 422217  
 M: 07777 302227  
 W: 07777 302225

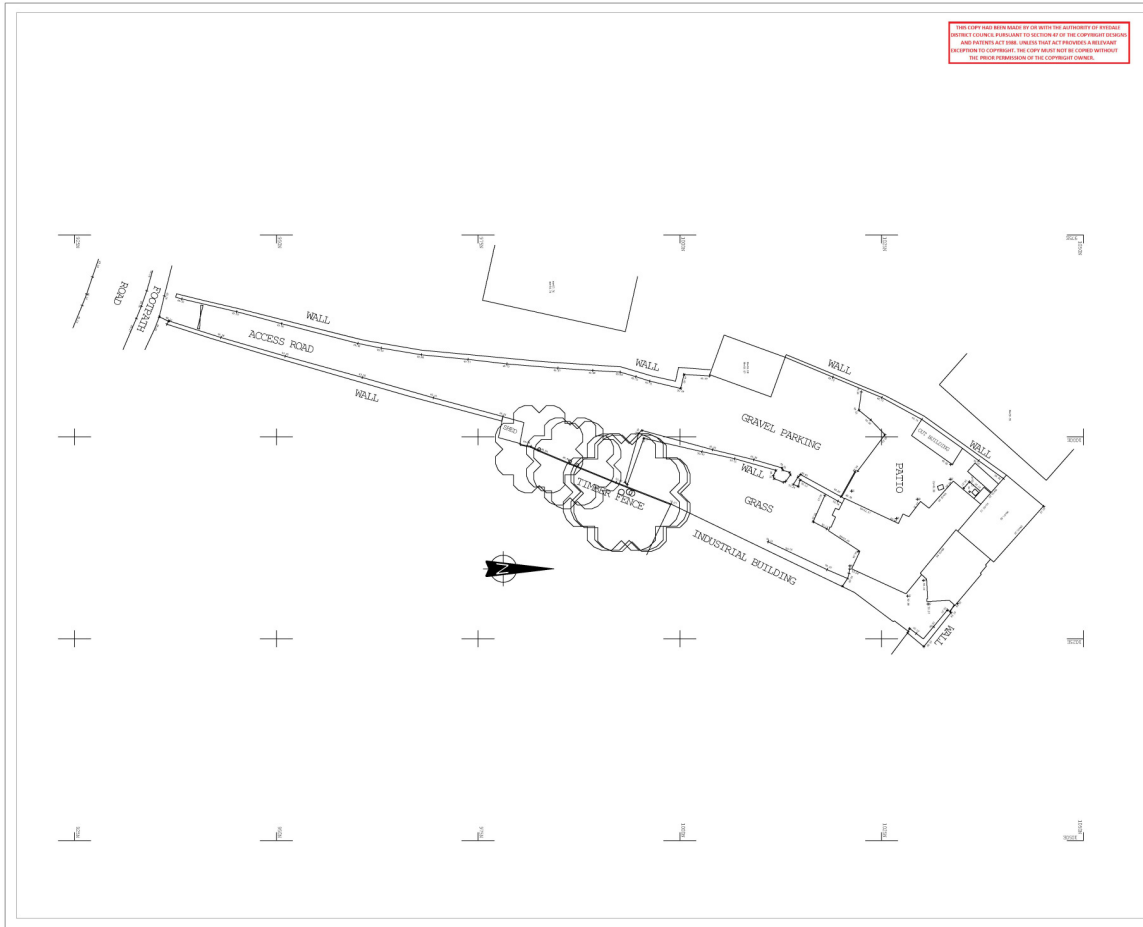
**CHESTNUT HOUSE**  
**MARTON**  
**SINNINGTON**  
**YORK**  
**YO62 6RD**

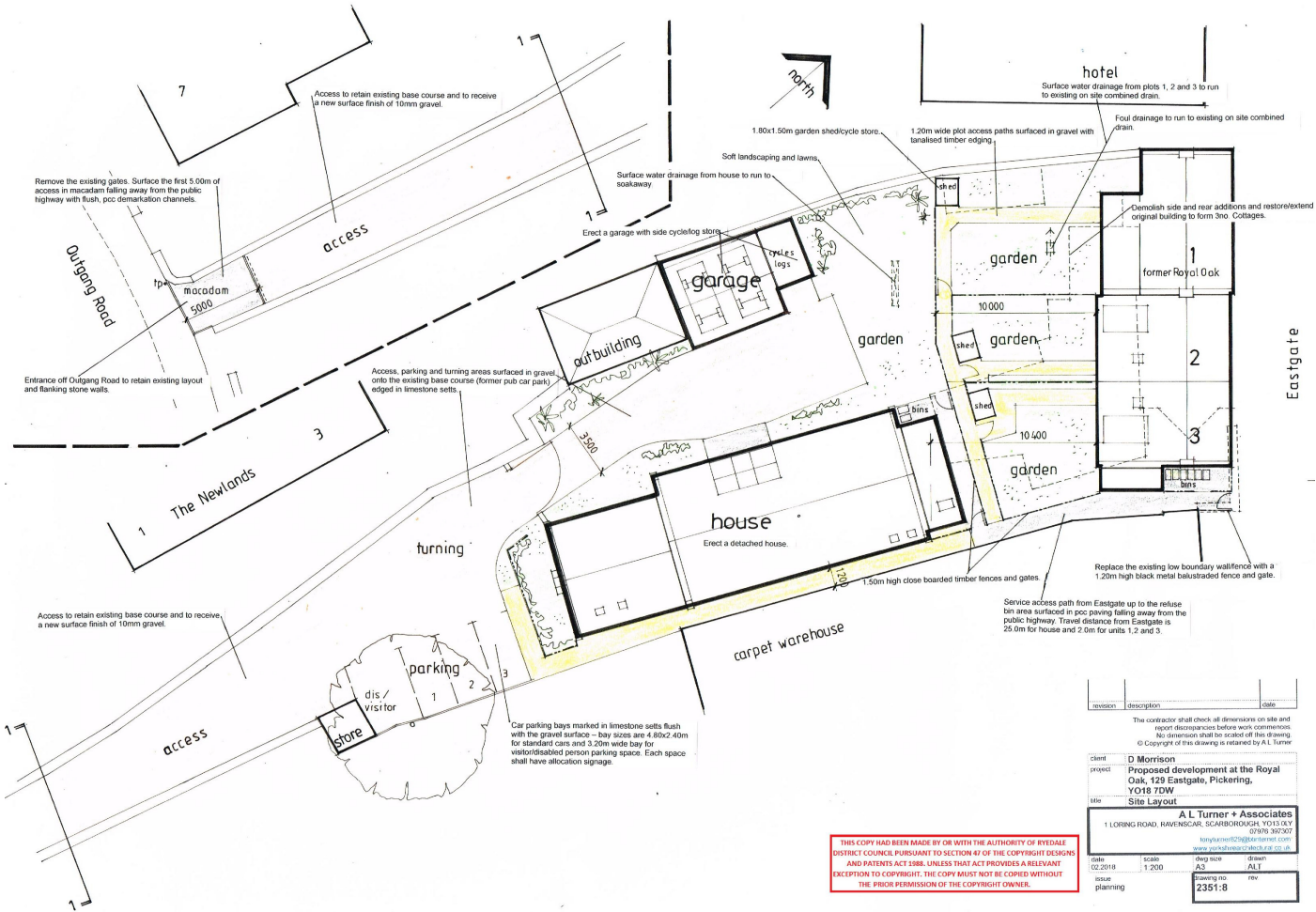
**THE ROYAL OAK**

**TOPO**

DATE	BY	REVISION
08/10/2017	DUNE DES	1
08/10/2017	DUNE DES	2

1:100	AI	2006-001	#
-------	----	----------	---





THIS COPY HAS BEEN MADE BY OR WITH THE AUTHORITY OF RYEDALE DISTRICT COUNCIL PURSUANT TO SECTION 41 OF THE COPYRIGHT DESIGNS AND PATENTS ACT 1988. UNLESS THAT ACT PROVIDES A RELEVANT EXCEPTION TO COPYRIGHT, THE COPY MUST NOT BE COPIED WITHOUT THE PRIOR PERMISSION OF THE COPYRIGHT OWNER.

revision	description	date

The contractor shall check all dimensions on site and report discrepancies before work commences. No dimensions shall be scaled off this drawing. © Copyright of this drawing is retained by A.L. Turner

client	D Morrison		
project	Proposed development at the Royal Oak, 129 Eastgate, Pickering, YO18 7DW		
site	Site Layout		
<b>A.L. Turner + Associates</b>			
1 LORING ROAD, RAVENSCAR, SCARBOROUGH YO13 8LY			
Tel: 01793 307507			
www.alturner.co.uk			
date	scale	drawn	
02/2018	1:200	ASJ	ALT
issue		drawing no.	rev
planning		2351:8	